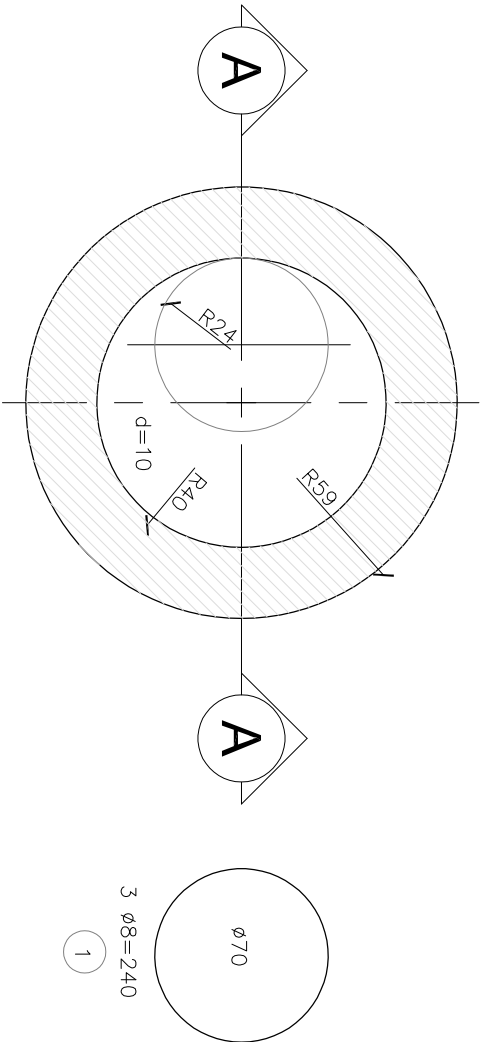


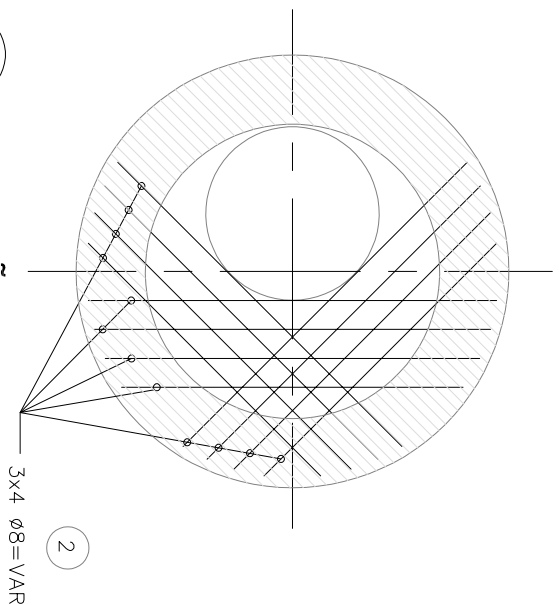
1 LAJE SUPERIOR

ESCALA 1/20
Ø DO BALÃO – 100, 120
140, 160, 220 E 250



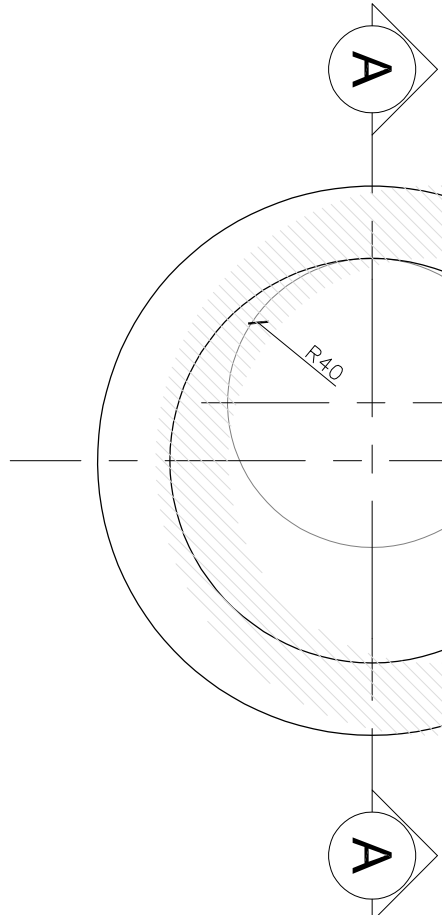
5 ARMACÃO

ESCALA 1/20



2 LAJE INTERMEDIÁRIA

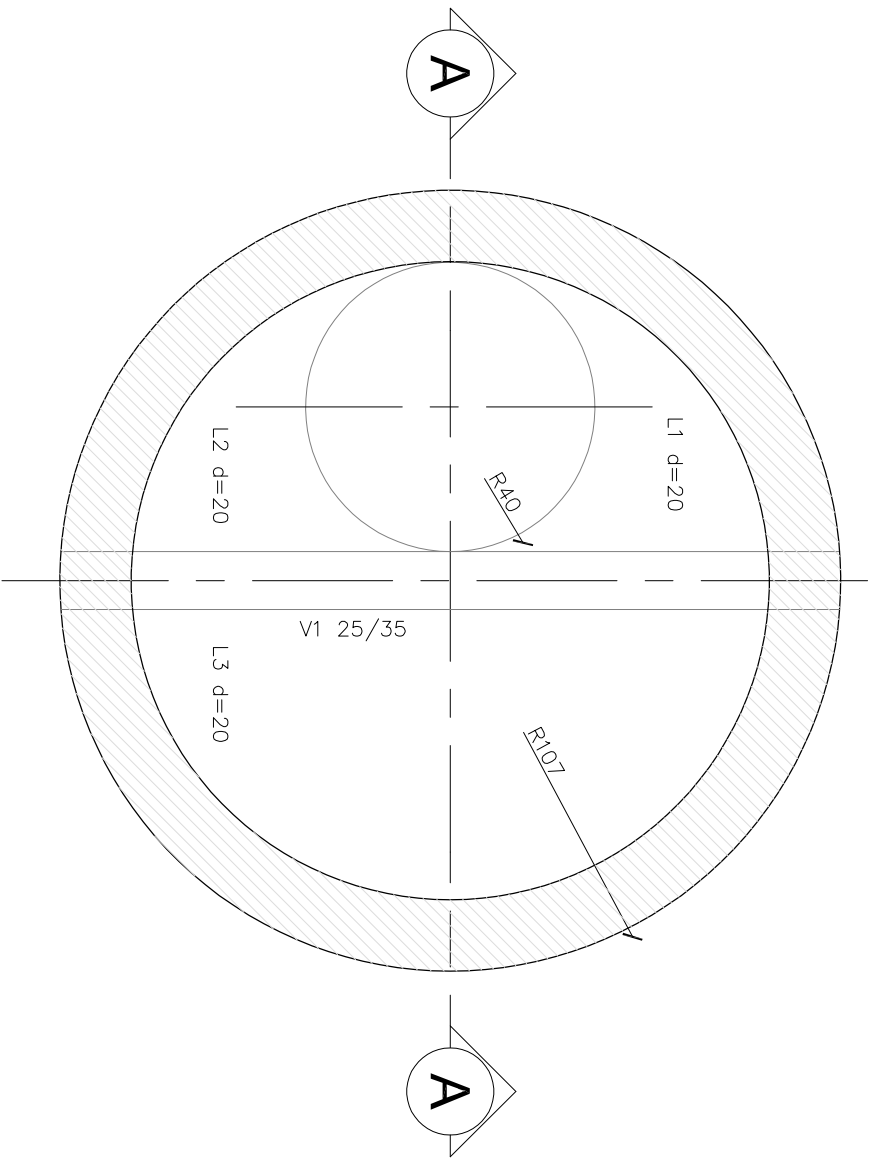
ESCALA 1/20
Ø DO BALÃO – 120, 140 E 160
R = 0,85 , 1,095 E 1,15



3 LAJE INTERMEDIÁRIA

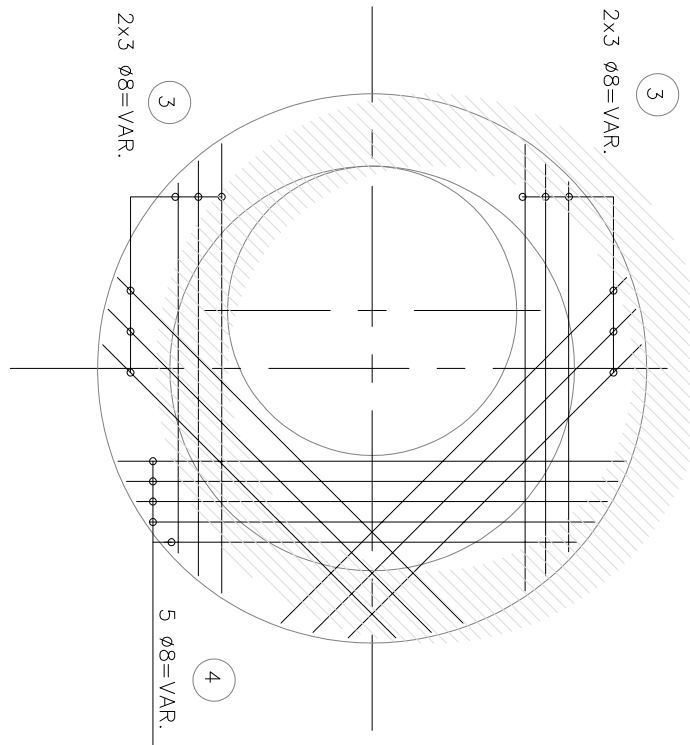
ESCALA 1/20

Ø DO BALÃO – 220 E 250
R = 1,35 E 1,50



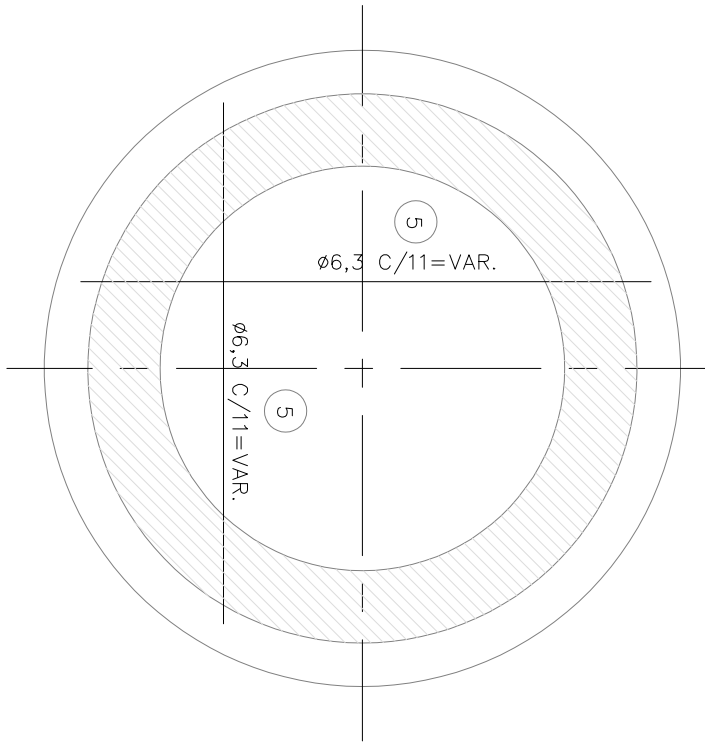
7 ARMACÃO

ESCALA 1/20



8 ARMACÃO

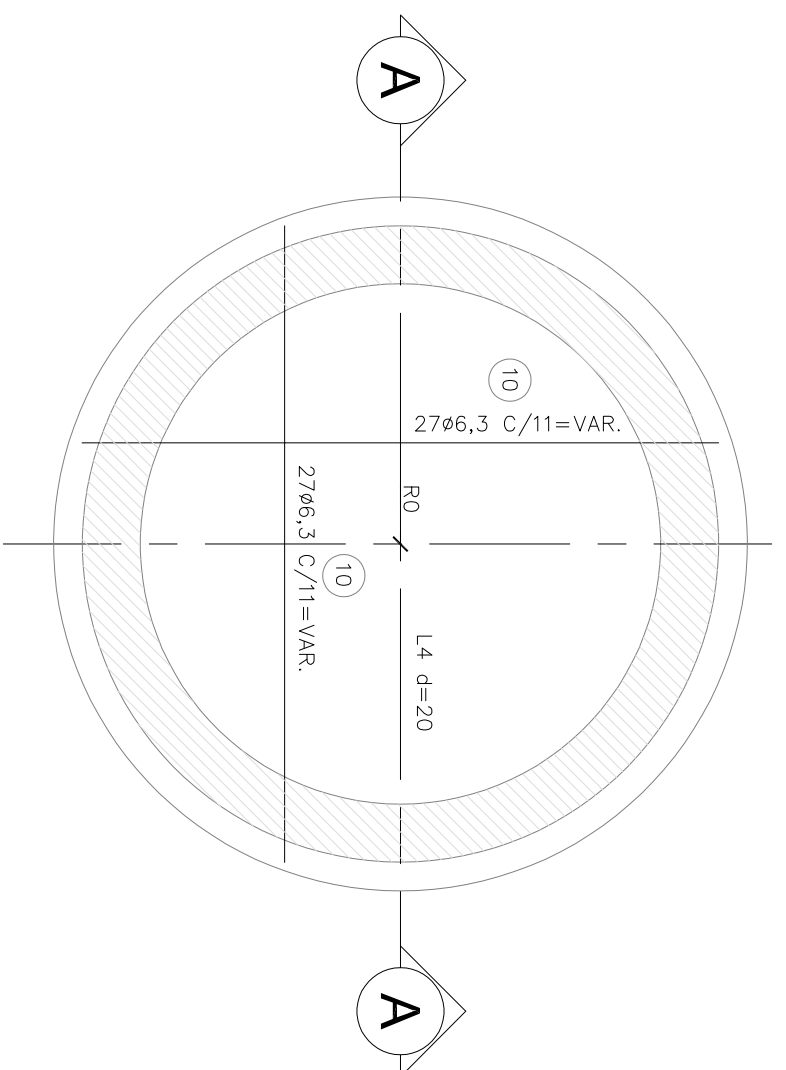
ESCALA 1/20



11 LAJE DE FUNDO

ESCALA 1/20

Ø DO BALÃO – 220 E 250
R = 1,50 E 1,65



BALÃO Ø100

LISTA DE AÇO CA-50/60			
F	Q	Ø	COMPRIMENTOS (m)
			UNITÁRIA
			TOTAL
1	3	8,0	2,40
2	12	8,0	7,20
3	12	8,0	16,80
5	34	6,3	56,10

RESUMO DO AÇO CA-50/60			
Ø	METROS	PESO	+10%
6,3	56,10	13,74	15
8,0	24	9,48	10
			25

BALÃO Ø120

LISTA DE AÇO CA-50/60			
F	Q	Ø	COMPRIMENTOS (m)
			UNITÁRIA
			TOTAL
1	3	8,0	2,40
2	12	8,0	7,20
3	12	8,0	16,00
3	12	8,0	VAR.
4	5	8,0	14,00
5	38	6,3	7,50
14	4	8,0	72,20
15	21	5,0	17,60
			15,75

RESUMO DO AÇO CA-50/60			
Ø	METROS	PESO	+10%
5,0	15,75	2,43	3
6,3	72,6	17,78	20
8,0	62,3	24,61	27
			50,00

BALÃO Ø150

LISTA DE AÇO CA-50/60			
F	Q	Ø	COMPRIMENTOS (m)
			UNITÁRIA
			TOTAL
1	3	8,0	2,40
2	12	8,0	7,80
3	12	8,0	VAR.
3	12	8,0	19,20
4	5	8,0	16,10
5	40	6,3	8,50
14	4	8,0	80,00
15	24	5,0	20,80
			18,00

RESUMO DO AÇO CA-50/60			
Ø	METROS	PESO	+10%
5,0	18	2,77	3
6,3	80,00	19,60	21
8,0	73,1	29	31
			55

BALÃO Ø180

LISTA DE AÇO CA-50/60			
F	Q	Ø	COMPRIMENTOS (m)
			UNITÁRIA
			TOTAL
1	3	8,0	2,40
2	12	8,0	7,20
3	12	8,0	16,80
3	12	8,0	VAR.
4	5	8,0	36,00
5	48	6,3	10,50
14	4	8,0	100,80
15	30	5,0	25,20
16	2	6,3	22,50
17	57	6,3	31,20
			24,00

RESUMO DO AÇO CA-50/60			
Ø	METROS	PESO	+10%
5,0	23	3,5	4
6,3	156	38	42
8,0	95,7	38	41
			87

BALÃO Ø220

LISTA DE AÇO CA-50/60			
F	Q	Ø	COMPRIMENTOS (m)
			UNITÁRIA
			TOTAL
1	3	8,0	2,40
2	12	8,0	7,20
3	12	8,0	16,80
3	12	8,0	VAR.
4	18	8,0	12,60
5	30	6,3	13,20
6	30	6,3	42,00
7	12	8,0	16,10
8	30	6,3	156,60
9	7	6,3	VAR.
10	54	6,3	5,40
11	2	5,0	24,30
12	9	10,0	CORR.
13	14	5,0	16,10
14	4	8,0	30,80
15	36	5,0	27,00
16	2	6,3	VAR.
17	57	6,3	31,20
			24,00

RESUMO DO AÇO CA-50/60			
Ø	METROS	PESO	+10%
5,0	49	7,5	8
6,3	270	61	66
8,0	81	32	35
10,0	25	16	17
			126

BALÃO Ø250

LISTA DE AÇO CA-50/60			
F	Q	Ø	COMPRIMENTOS (m)
			UNITÁRIA
			TOTAL
1	3	8,0	2,40
2	12	8,0	7,20
3	12	8,0	16,80
3	12	8,0	VAR.
4	18	8,0	18,70
5	34	6,3	20,00
6	34	6,3	VAR.
7	16	8,0	52,70
8	10	6,3	26,00
9	10	6,3	198,00
10	60	6,3	VAR.
11	2	5,0	6,60
12	9	10,0	CORR.
13	16	5,0	29,70
14	4	8,0	1,15
15	41	5,0	18,40
16	2	6,3	VAR.
17	57	6,3	34,00
			0,75
			30,75
			31,20
			24,00

RESUMO DO AÇO CA-50/60			
Ø	METROS	PESO	+10%
5,0	56	8,6	9
6,3	332	81	89
8,0	97	38	42
10,0	30	19	20
			160

DESENHOS DE REFERÊNCIA:

1 - PROJETO EXECUTIVO - ESTÂNCIA PORTO VELHO
PROJETO HIDRÁULICO DA REDE COLETORA
PLANTA GERAL - DESENHO N.º: 01718-DE-PHR-01

NOTAS:

1 - OS FERROS N.º 16 e N.º 17 CORRESPONDENTES AOS ELEMENTOS PRÉ-MOLDADOS (Ø60 E Ø100) REFEREM-SE NAS TABELAS A
SOMENTE UM ELEMENTO DE CADA.

LEGENDA:

N°	REVISÃO	DATA
RO	EMISSÃO FINAL	09/2018